

Auxiliary Inverter

DCU PSU 30/5.6

accelerate the shift™



Managing your hotel loads and fine tune your consumer interactions can boost your vehicle's efficiency for extended range.

This two channel converter with 3-phase DC/AC and DC/DC should be part of your vehicle's auxiliary power supply strategy.

Features



High performance

- Operating voltage 400 – 848 VDC
- Output AC power 30 kW
- Output DC power 5.6 kW

Designed for heavy duty vehicles

- Water-cooling
- Compact integration in IP6K9K housing
- Certified according to automotive EMC ECE R 10

Interface

- Output for auxiliary drive control unit (DCU)
- Output for LV system (PSU)
- SAE J1939 CAN interface with stepwise adjustments from 125 kbps to 500 kbps

Accelera Inc.
Box 3005, Columbus, IN 47202-3005
U.S.A. Bulletin 6459191,
Produced in U.S.A. 4/24
©2024 Accelera Inc.



General Data



Mechanical data

Volume	9L
Dimensions	310 x 394 x 81 mm
Weight	8.4 kg

Cooling

Cooling Media	Water-Glycol
---------------	--------------

HV input

DC input voltage	400 - 848 V
Rated DC voltage	800 V

DCU - AC output

Rated output current	32 A rms
Rated output power	20 kW
Max output current	57 A rms (10s)
Max output power	36 kW (10 s)

PSU - DC output

DC output voltage 12 V system	6 - 16 V
DC output voltage 24 V system	16 - 32 V
Rated output voltage	28 V
Max. DC output current	200 A

Ambient conditions

Operating Temperature	-40°C to 85°C
Ingress protection class	IP6K9K

Interfaces

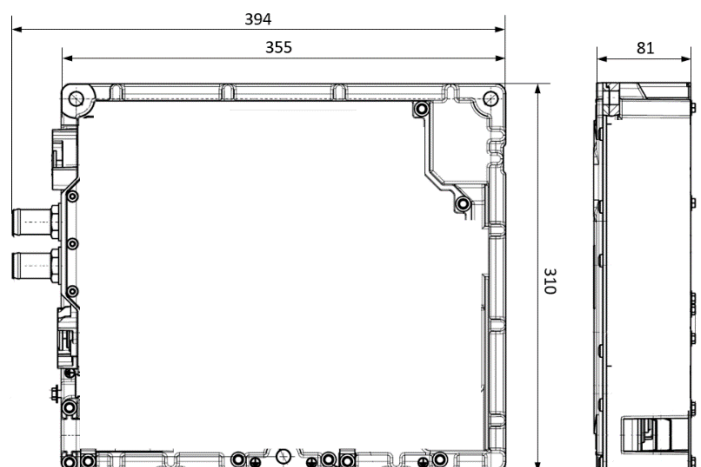
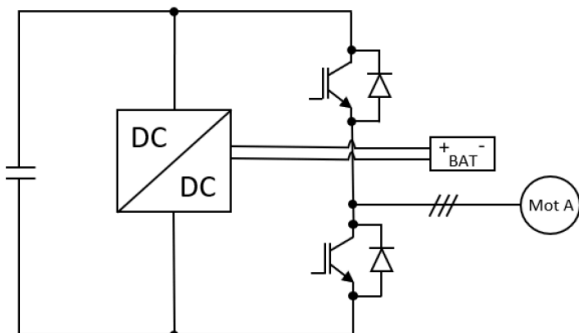


Vehicle signal interface

- 1 x CAN interface
- 4 x Digital inputs (8 - 36 VDC voltage range)
- 4 x Digital outputs (8 - 36 VDC voltage range)
- 1 x Resolver connection
- 1 x External temp. measurement PT1000

Motor signal interfaces

- Resolver
- PT1000



We are Accelera
And we're on a mission to transition the world's most economically critical industries to zero-emissions power.

Learn more at accelerazero.com