

Auxiliary Inverter

# DCU 15/7.5

accelerate the shift™



Managing your hotel loads and fine tune your consumer interactions can boost your vehicle's efficiency for extended range.

This two channel converter with 3-phase DC/AC completes your vehicle's auxiliary power supply strategy.

## Features



### High performance

- Operating voltage 400 – 848 VDC
- Output AC power 15 kW
- Output DC power 7.5 kW

### Designed for heavy duty vehicles

- Water-cooling
- Compact integration into IP6K9K housing
- Certified according to automotive EMC norm ECE R 10

### Interface

- Two outputs for auxiliary drive control unit (DCU)
- SAE J1939 CAN interface with stepwise adjustments from 125 kbps to 500 kbps

Accelera Inc.  
Box 3005, Columbus, IN 47202-3005  
U.S.A. Bulletin 6459191,  
Produced in U.S.A. 4/24  
©2024 Accelera Inc.



## General Data



### Mechanical data

Volume	9L
Dimensions	310 x 394 x 81 mm
Weight	7 kg

### Cooling

Cooling Media	Water-Glycol
---------------	--------------

### HV input

DC input voltage	400 - 848 V
Rated DC voltage	800 V

### DCU - AC output 1

Rated output current	15 A rms
Rated output power	10 kW
Max output current	27 A rms (10s)
Max output power	18 kW (10 s)

### DCU - AC output 2

Rated output current	8 A rms
Rated output power	5 kW
Max output current	14 A rms (10 s)
Max output power	9 kW (10 s)

### Ambient conditions

Operating Temperature	-40°C to 85°C
Ingress protection class	IP6K9K

## Interfaces

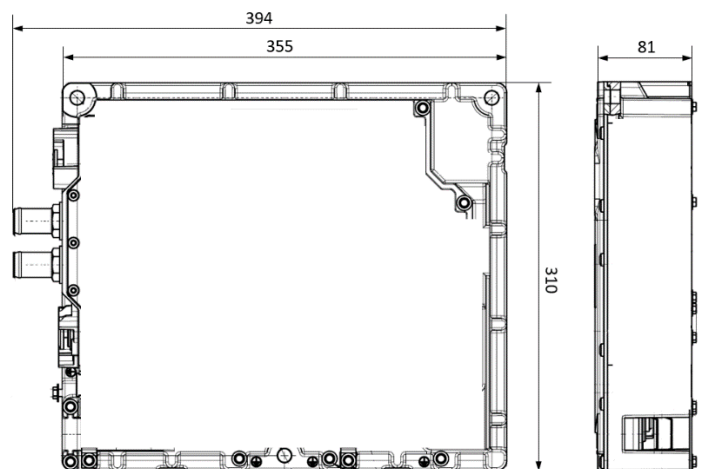
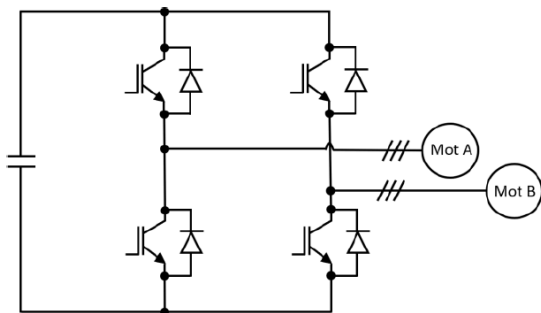


### Vehicle signal interface

- 1 x CAN interface
- 4 x Digital inputs (8 - 36 VDC voltage range)
- 4 x Digital outputs (8 - 36 VDC voltage range)
- 2 x Resolver connection
- 2 x External temp. measurement PT1000

### Motor signal interfaces

- Resolver
- PT1000



We are Accelerera  
 And we're on a mission to transition the world's most  
 economically critical industries to zero-emissions  
 power.

Learn more at [accelerazero.com](https://accelerazero.com)