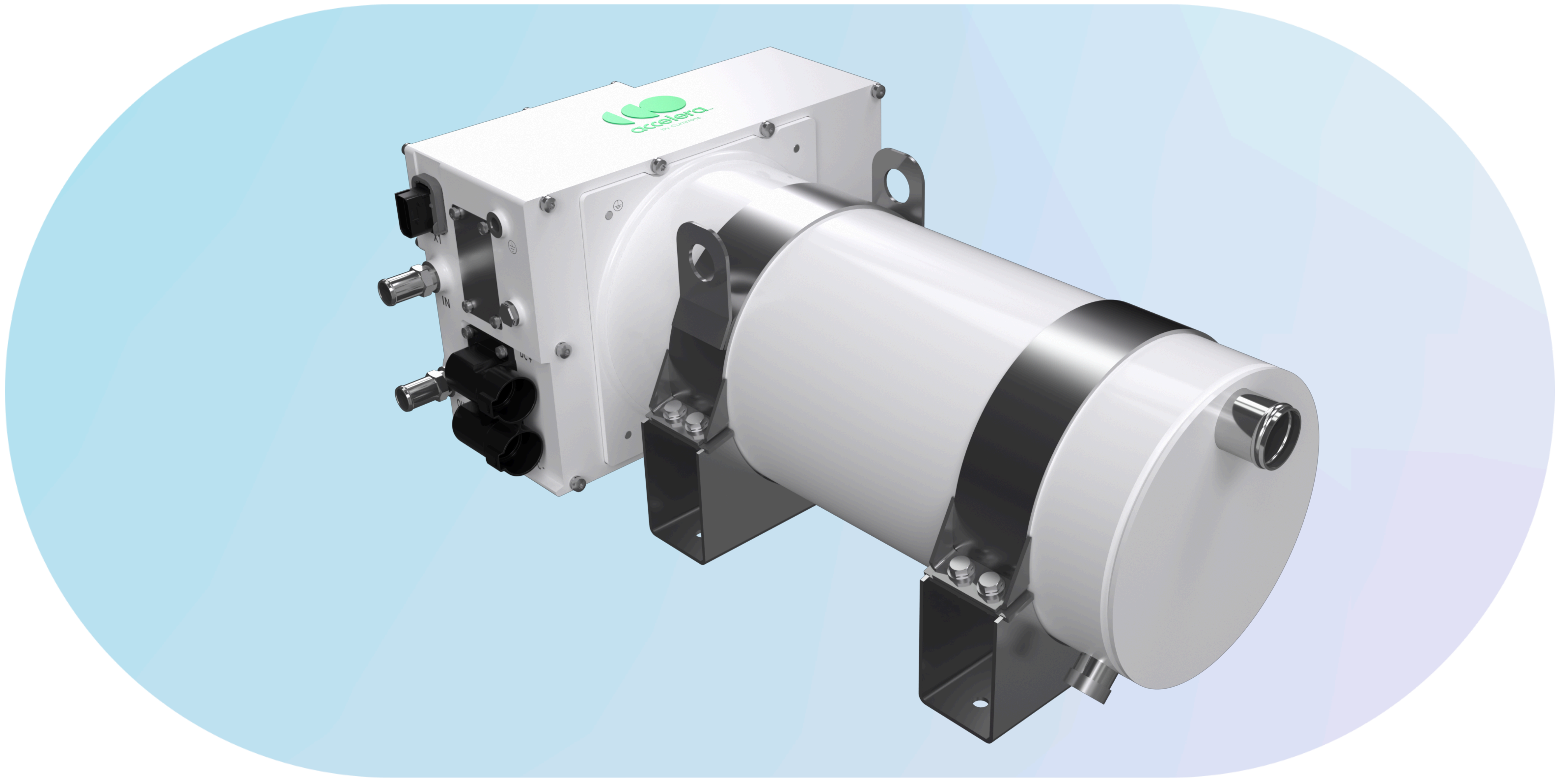


iBCR

Integrated Brake Chopper & Resistor

accelerate the shift™



The integrated Brake Chopper & Resistor (iBCR) is designed as a multiple-use system for support of electrical endurance braking and vehicle heating requirements.

Features



Benefits after full integration into the vehicle system:

- Prevent upsizing of traction battery
- Eliminate mechanical retarder by electric traction system
- Simplify energy management
- Ensure relief of mechanical brakes by increase of recuperative braking
- Provide better utilization of braking energy (e.g. converting to heat in vehicle cabin)

Standardized product, readily available

Most cost-effective way to meet UN ECE R 13

Cyber security capable solution

HV filter inside for EMC noise suppression

Based on proven ELFA 3 Technology

Specifications



Operating voltage level	400 - 850 VDC
Rated output power	150 kW (250kW optional available)
Dimensions (Lx W x H)	657 x 362 x 250 mm (950 x 362 x 250 mm)
Weight, unfilled	59kg (72 kg)
Operating hours / Standby hours	5000hrs / 60000hrs
Operating temperature	40 °C...+85° C
Conformity with standards	ISO 26262 ASIL A for thermal runaway, ECE R 10, ISO 16750-3 Type 8
Ingress protection	IP6K9K, IPX7

Solutions for a wide range of applications.

Our deep understanding of customer needs enables us to create products that can do what needs to be done. No matter what class, segment or rating, Accelera helps you deliver more efficiently than ever.